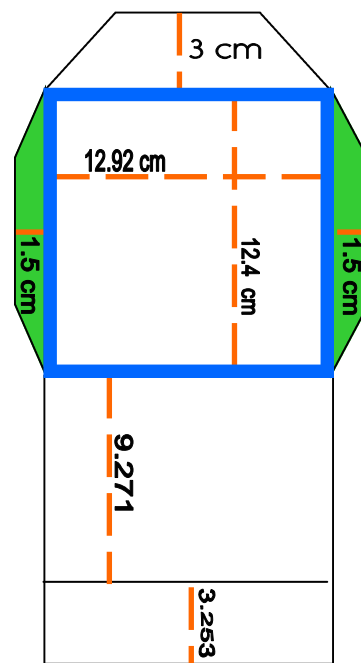
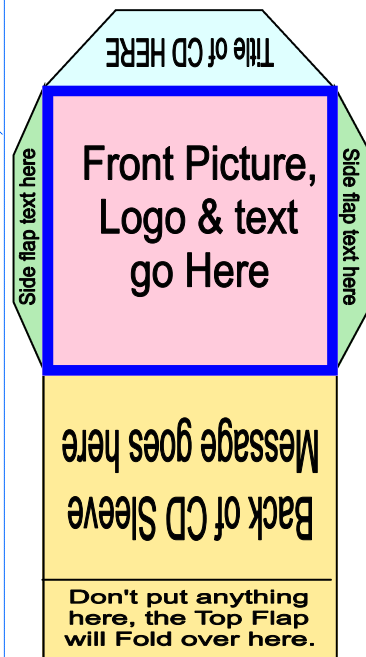


Cut this Corner Off

Cut this Corner Off

How to Custom make  
your own CD Sleeve,  
by using a 8.5 x 11  
printed page.



- To make a CD Sleeve:
1. Fill in all the areas with your own text and pictures.
  2. Print it
  3. Then cut the outline off of the paper
  4. Then fold along all the Blue Lines to construct the CD Sleeve.
  5. Put paste on the Green Flap areas, and paste them around the bottom section.

Once dry, it will hold your CD.

CUT THIS AREA OFF

CUT THIS AREA OFF